

COMPASS

Queens Luxury Report

September 08 - 14, 2025, Residential Contracts \$1.25M+

Photo: [41-05 20th Avenue](#)

The Queens luxury real estate market, defined as all properties priced \$1.25M and above, saw 21 contracts signed this week, made up of 4 condos, and 17 houses. The previous week saw 13 deals. For more information or data, please reach out to a Compass agent.

\$1,807,209

Average Asking Price

\$1,699,000

Median Asking Price

\$877

Average PPSF

2%

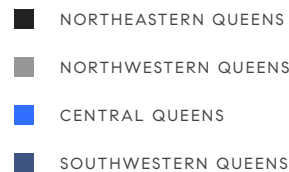
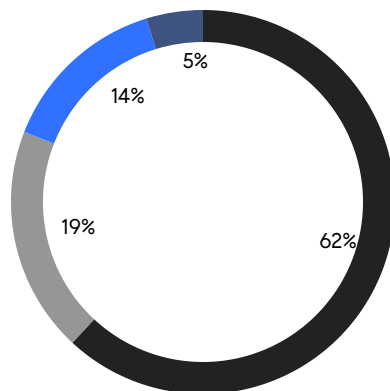
Average Discount

\$37,951,388

Total Volume

77

Average Days On Market



4

Condo Deal(s)

0

Co-op Deal(s)

17

Single-Family Deal(s)

\$1,810,138

Average Asking Price

\$0

Average Asking Price

\$1,806,520

Average Asking Price

\$1,965,275

Median Asking Price

\$0

Median Asking Price

\$1,649,950

Median Asking Price

\$1,561

Average PPSF

\$694

Average PPSF

1,167

Average SqFt

2,485

Average SqFt



95 Malba Drive

Malba

Contract Signed

Type	House	Price	\$3,500,000	Sq. Ft.	-	Beds	5
DOM	106	Initial	\$3,500,000	PPSF	-	Baths	3



10-22 47th Avenue

Long Island City

Contract Signed

Type	House	Price	\$2,850,000	Sq. Ft.	3,365	Beds	3
DOM	182	Initial	\$2,950,000	PPSF	\$847	Baths	3



48-04 Glenwood Street

Little Neck

Contract Signed

Type	House	Price	\$2,680,000	Sq. Ft.	3,376	Beds	5
DOM	127	Initial	\$2,680,000	PPSF	\$794	Baths	6.5



307 Burns Street

Forest Hills

Contract Signed

Type	House	Price	\$2,099,000	Sq. Ft.	2,632	Beds	4
DOM	27	Initial	\$2,099,000	PPSF	\$798	Baths	2

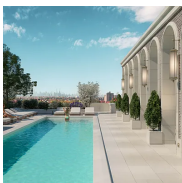


24-01 Queens Plaza North, Unit 1602

Astoria

Contract Signed

Type	Condo	Price	\$2,060,000	Sq. Ft.	1,165	Beds	2
DOM	-	Initial	\$2,060,000	PPSF	\$1,769	Baths	2



78-29 Austin Street, Unit PH2E

Forest Hills

Contract Signed

Type	Condo	Price	\$2,045,550	Sq. Ft.	1,512	Beds	3
DOM	-	Initial	\$2,045,550	PPSF	\$1,353	Baths	2

Compass is a licensed real estate broker and abides by Equal Housing Opportunity laws. All material presented herein is intended for informational purposes only. Information is compiled from sources deemed reliable but is subject to errors, omissions, changes in price, condition, sale, or withdrawal without notice. No statement is made as to the accuracy of any description. All measurements and square footages are approximate. This is not intended to solicit property already listed. Nothing herein shall be construed as legal, accounting or other professional advice outside the realm of real estate brokerage.

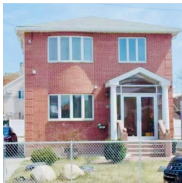


24-01 Queens Plaza North, Unit 1503

Astoria

Contract Signed

Type	Condo	Price	\$1,885,000	Sq. Ft.	1,118	Beds	2
DOM	-	Initial	\$1,885,000	PPSF	\$1,687	Baths	5



34-41 201st Street

Auburndale

Contract Signed

Type	House	Price	\$1,799,000	Sq. Ft.	2,430	Beds	4
DOM	35	Initial	\$1,799,000	PPSF	\$741	Baths	3



33-15 Bell Boulevard

Bayside

Contract Signed

Type	House	Price	\$1,790,000	Sq. Ft.	2,519	Beds	3
DOM	149	Initial	\$2,250,000	PPSF	\$711	Baths	2.5

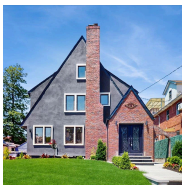


252-25 Leith Road

Little Neck

Contract Signed

Type	House	Price	\$1,700,000	Sq. Ft.	2,632	Beds	4
DOM	19	Initial	\$1,700,000	PPSF	\$646	Baths	3



150-11 84th Drive

Briarwood

Contract Signed

Type	House	Price	\$1,699,000	Sq. Ft.	2,520	Beds	5
DOM	78	Initial	\$1,849,000	PPSF	\$675	Baths	4



150-27 3rd Avenue

Whitestone

Contract Signed

Type	House	Price	\$1,649,950	Sq. Ft.	3,180	Beds	5
DOM	32	Initial	\$1,649,950	PPSF	\$519	Baths	4

Compass is a licensed real estate broker and abides by Equal Housing Opportunity laws. All material presented herein is intended for informational purposes only. Information is compiled from sources deemed reliable but is subject to errors, omissions, changes in price, condition, sale, or withdrawal without notice. No statement is made as to the accuracy of any description. All measurements and square footages are approximate. This is not intended to solicit property already listed. Nothing herein shall be construed as legal, accounting or other professional advice outside the realm of real estate brokerage.

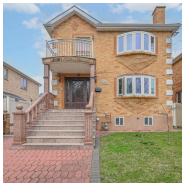


154-04 25th Avenue

Flushing

Contract Signed

Type	House	Price	\$1,598,000	Sq. Ft.	2,262	Beds	4
DOM	202	Initial	\$1,888,000	PPSF	\$707	Baths	3



168-07 81st Avenue

Hillcrest

Contract Signed

Type	House	Price	\$1,598,000	Sq. Ft.	-	Beds	3
DOM	65	Initial	\$1,698,000	PPSF	-	Baths	3



14922 32nd Avenue

Flushing

Contract Signed

Type	House	Price	\$1,328,000	Sq. Ft.	2,000	Beds	3
DOM	15	Initial	\$1,328,000	PPSF	\$664	Baths	2

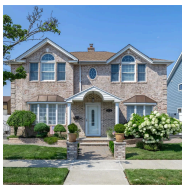


141-63 11th Avenue

Whitestone

Contract Signed

Type	House	Price	\$1,298,888	Sq. Ft.	2,698	Beds	3
DOM	64	Initial	\$1,398,888	PPSF	\$482	Baths	3



15824 87th Street

Rockwood Park

Contract Signed

Type	House	Price	\$1,295,000	Sq. Ft.	2,114	Beds	4
DOM	25	Initial	\$1,295,000	PPSF	\$613	Baths	2



33-50 210 Street

Bayside

Contract Signed

Type	House	Price	\$1,288,000	Sq. Ft.	1,440	Beds	3
DOM	89	Initial	\$1,288,000	PPSF	\$895	Baths	1

Compass is a licensed real estate broker and abides by Equal Housing Opportunity laws. All material presented herein is intended for informational purposes only. Information is compiled from sources deemed reliable but is subject to errors, omissions, changes in price, condition, sale, or withdrawal without notice. No statement is made as to the accuracy of any description. All measurements and square footages are approximate. This is not intended to solicit property already listed. Nothing herein shall be construed as legal, accounting or other professional advice outside the realm of real estate brokerage.



189-46 45th Drive
Auburndale

Contract Signed

Type	House	Price	\$1,280,000	Sq. Ft.	2,550	Beds	4
DOM	14	Initial	\$1,280,000	PPSF	\$502	Baths	2.5



7342 180th Street
Utopia

Contract Signed

Type	House	Price	\$1,258,000	Sq. Ft.	1,546	Beds	3
DOM	31	Initial	\$1,258,000	PPSF	\$814	Baths	1



31-16 21st Street, Unit PH2D
Astoria

Contract Signed

Type	Condo	Price	\$1,250,000	Sq. Ft.	873	Beds	2
DOM	112	Initial	\$1,250,000	PPSF	\$1,432	Baths	2

Compass is a licensed real estate broker and abides by Equal Housing Opportunity laws. All material presented herein is intended for informational purposes only. Information is compiled from sources deemed reliable but is subject to errors, omissions, changes in price, condition, sale, or withdrawal without notice. No statement is made as to the accuracy of any description. All measurements and square footages are approximate. This is not intended to solicit property already listed. Nothing herein shall be construed as legal, accounting or other professional advice outside the realm of real estate brokerage.